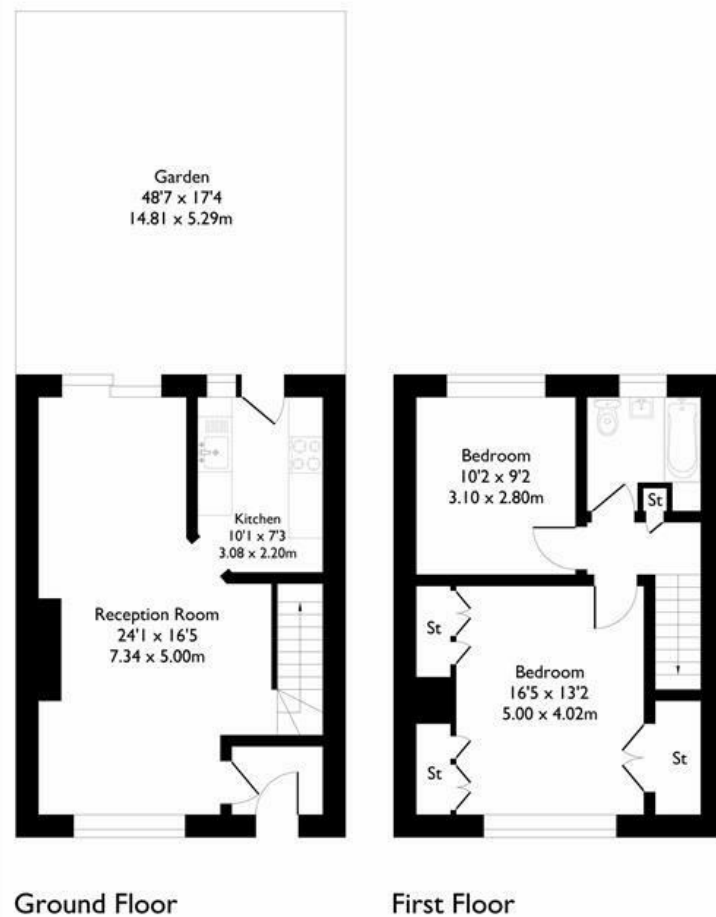


Lilliput Avenue, Northolt, UB5
Approximate Floor Area = 73.4 sq m / 790 sq ft



Floor plan produced in accordance with RICS Property Measurement 2nd Edition. Although Pink Plan Ltd ensures the highest level of accuracy, measurements of doors, windows and rooms are approximate and no responsibility is taken for error, omission or misstatement. These plans are for representation purposes only and no guarantee is given on the total square footage of the property within this plan. The figure icon is for initial guidance only and should not be relied on as a basis of valuation.



HOUSE - TERRACED

Lilliput Avenue UB5
£1,900 Per Month

FEATURES

- Gas Central Heating
- Double Glazing
- Private Garden
- Local Primary and High Schools
- Easy Access to A40
- Newly Refurbished

HOUSE - TERRACED

Lilliput Avenue UB5

£1,900 Per Month

This beautifully presented two bedroom family home is in a prime location for Northolt tube station (Central Line) and affording easy access to the A40 and the award-winning Northala Fields Park. On the ground floor there is a bright and open through lounge and a newly refurbished kitchen that leads on to the private rear garden. On the first floor there are two excellent size double bedrooms and the family bathroom.

